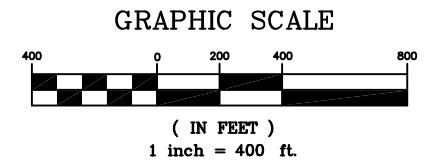


RECORD OF SURVEY BOUNDARY LINE ADJUSTMENT

IN SECTION 17 AND SECTION 20,
TOWNSHIP 19 NORTH, RANGE 17 EAST, W.M.
TAX PARCELS 717734 AND 207734



MONUMENTS VISITED
JANUARY 2012
LEGAL DESCRIPTIONS
SEE SHEET 3

LEGEND

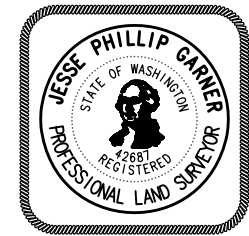
- FOUND MONUMENT AS NOTED
- SET 5/8"X24" REBAR W/ PLASTIC CAP

BASIS OF BEARINGS

SEE SHEET 3

SURVEY REFERENCES

SEE SHEET 3



Surveyor's Certificate

This Map correctly represents a Survey made by me or under my direction in conformance with the requirements of the Survey Recording Act at the request of

SWAUK VALLEY RANCH LLC in 08-16.

Jesse P. Garner, PLS 42687 Date

Accuracy Statement (WAC 332-130)

This Survey was performed with a Topcon Hyper+ RTK surveying system with a relative accuracy greater than 1:5000. Mathematical analysis where required is by least squares.

Note

No warranties are made as to matters of encroachment, adverse possession, unwritten title, riparian changes or flood zones, etc.

Date: 12-16-16

Scale: 1"=400'

Drawn By: JG

Surveyed By: JG/RB

Checked By: JG

Sheet 2 Of 3

Job Number: 2016-SWK

Survey For
SWAUK VALLEY RANCH, LLC.

Section 17, 20 T. 19 N, R. 17 E, W.M.
Kittitas, County, Washington

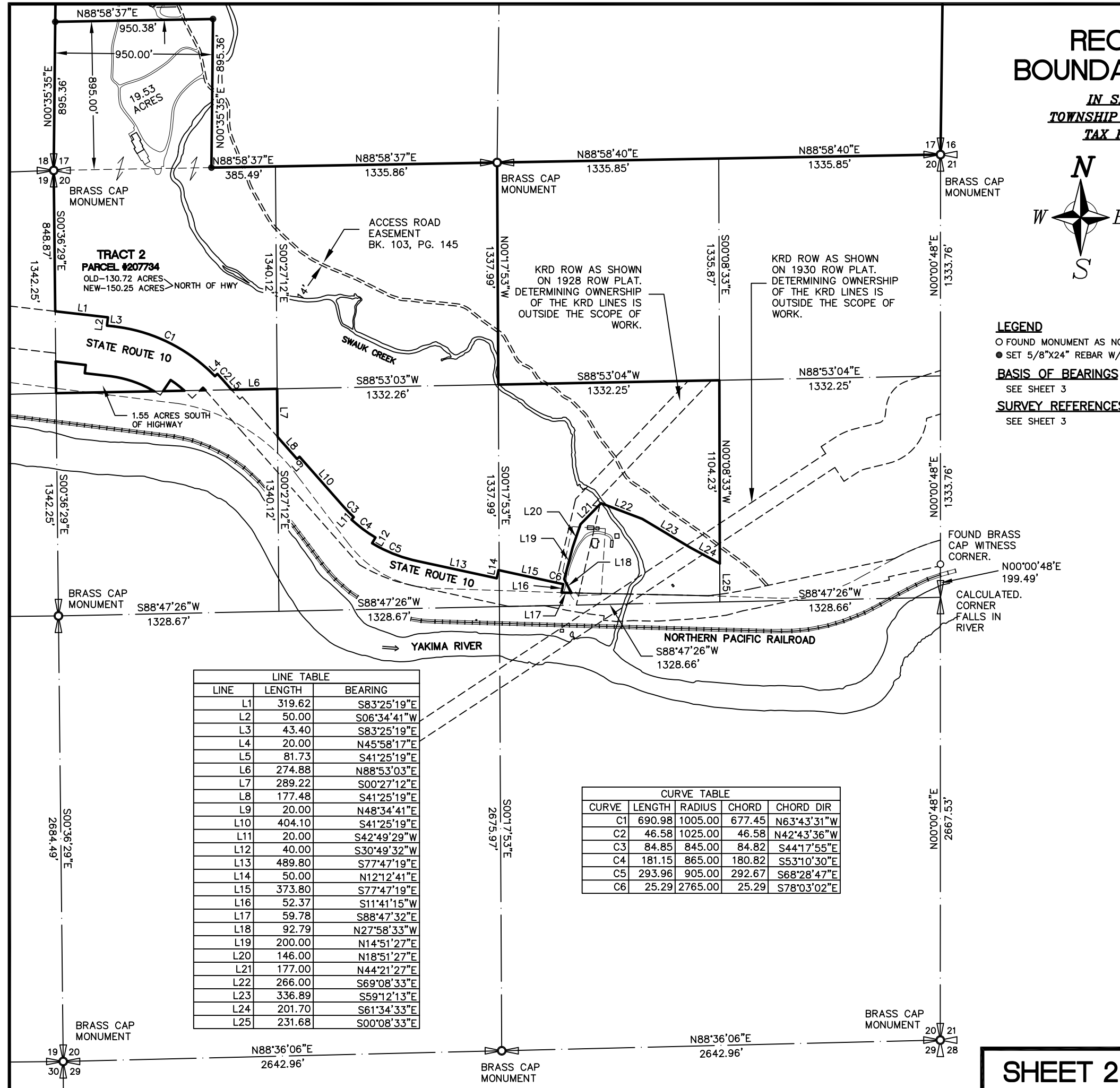
PSE Pioneer Surveying & Engineering, Inc.
Civil Engineering and Land Planning
125 Simcoe Drive
Goldendale, Washington 98620
Phone (509) 773-4945, Fax (509) 773-5888, E-Mail psee@gorge.net

Auditor's Certificate

Filed For Record This ____ Day of _____ 20____.
At _____ M.
In Book ____ Of Surveys At Page ____
At The Request Of Pioneer Surveying and Engineering, Inc.

KITTITAS COUNTY AUDITOR

DEPUTY COUNTY AUDITOR



LINE	LENGTH	BEARING
L1	319.62	S83°25'19"E
L2	50.00	S06°34'41"W
L3	43.40	S83°25'19"E
L4	20.00	N45°58'17"E
L5	81.73	S41°25'19"E
L6	274.88	N88°53'03"E
L7	289.22	S00°27'12"E
L8	177.48	S41°25'19"E
L9	20.00	N48°34'41"E
L10	404.10	S41°25'19"E
L11	20.00	S42°49'29"W
L12	40.00	S30°49'32"W
L13	489.80	S77°47'19"E
L14	50.00	N12°12'41"E
L15	373.80	S77°47'19"E
L16	52.37	S11°41'15"W
L17	59.78	S88°47'32"E
L18	92.79	N27°58'33"W
L19	200.00	N14°51'27"E
L20	146.00	N18°51'27"E
L21	177.00	N44°21'27"E
L22	266.00	S69°08'33"E
L23	336.89	S59°12'13"E
L24	201.70	S61°34'33"E
L25	231.68	S00°08'33"E

CURVE	LENGTH	RADIUS	CHORD	CHORD DIR
C1	690.98	1005.00	677.45	N63°43'31"W
C2	46.58	1025.00	46.58	N42°43'36"W
C3	84.85	845.00	84.82	S44°17'55"E
C4	181.15	865.00	180.82	S53°10'30"E
C5	293.96	905.00	292.67	S68°28'47"E
C6	25.29	2765.00	25.29	S78°03'02"E

SHEET 2